

Linear Replacement Relay
Drake Part # 362-0050

The enclosed relay is a general replacement relay for the DRAKE L-4/L-4B/L-7/L-75 linear amplifiers. Over the years various relays of several manufacturers were used in these amplifiers. Before disconnecting the existing relay from your linear, please compare the attached drawing (that pertains to your linear) to the wiring of your relay. Note any differences in wire color etc.

Before installing the new relay in your linear, please perform the following preliminary wiring steps to the new relay.

1. Locate the black leads that connect the armature contacts to terminals 7 and 10. Disconnect these two leads at the backside of terminals 7 and 10, leaving the other ends attached to the armature contacts. The two disconnected leads will be connected later as you install the new relay.

2. Install jumper leads as follows:

A. Connect a 5/8" jumper between the relay coil terminal and terminal 7.

B. Connect a 5/8" jumper between the opposite relay coil terminal and terminal 10.

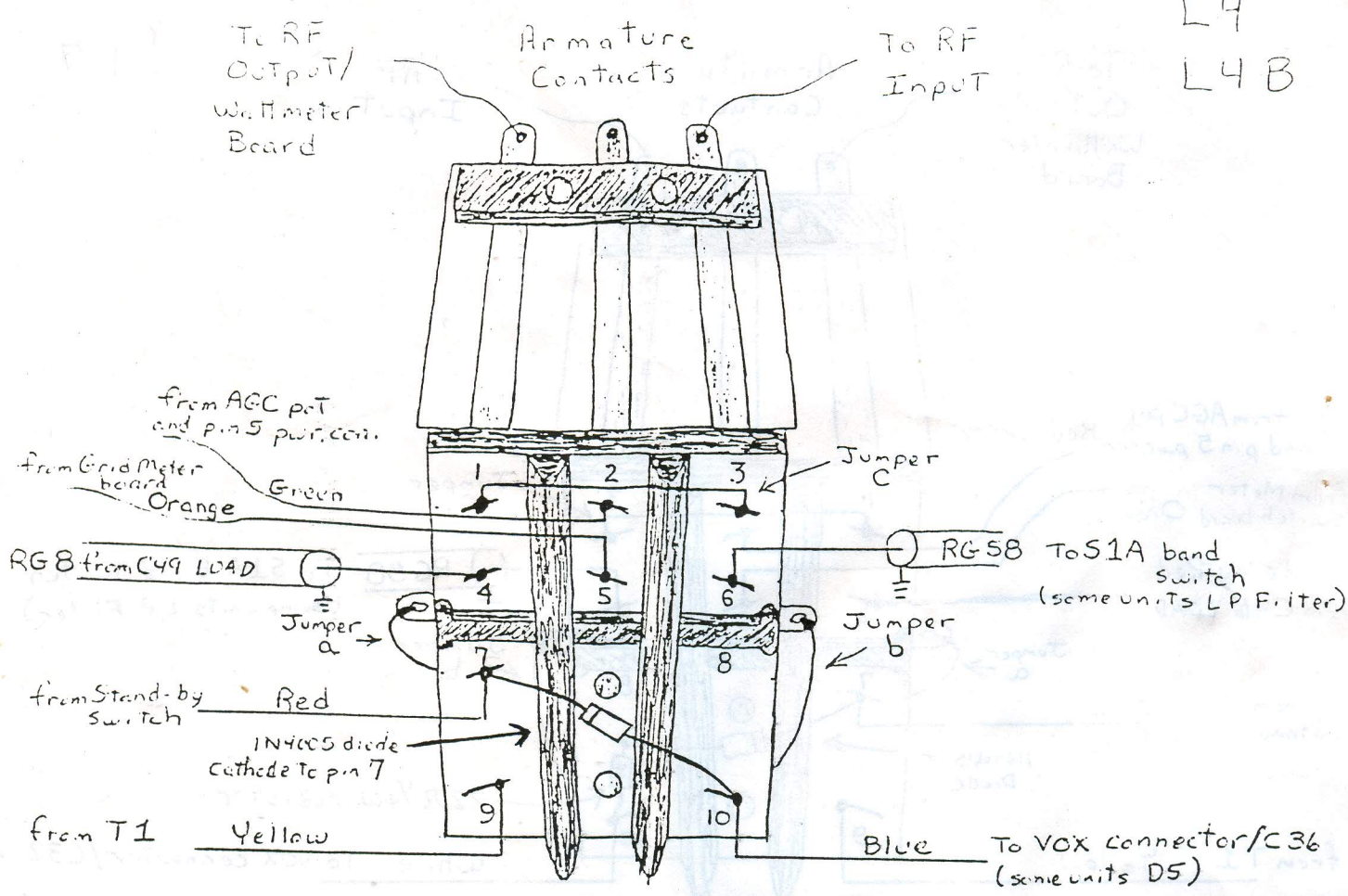
C. Connect a 1 1/4" jumper between terminal 1 and terminal 3.

3. Install a diode or diode/resistor combination between terminal 7 and terminal 10. Please refer to the drawing for your particular linear.

Unsolder the leads attached to the old relay and remove the old relay from your linear. Mount the new relay in your linear and connect the leads as per the drawing that pertains to your linear. Solder all leads. Inspect all solder connections and wiring.

REMOVE WHITE WIRES BEFORE Installing
Follow Diagrams

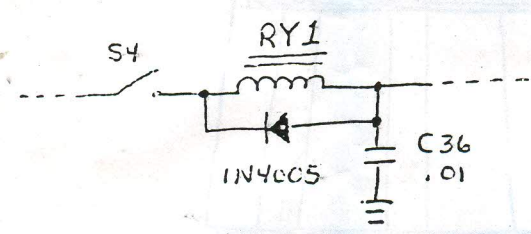
L4
L4B



Wires may be white with a colored trace.

Diode (1N4005) across relay coil is an update modification on most units.

Schematic Update



L7

To RF
Output/
Wattmeter
Board

Armature
Contacts

To RF
Input

from AGC pot
and p.n 5 par, con. Red

from Meter
switch board Orange

Heavy Red
from C46 LOAD

from Stand-by switch
Blue

from T1 Yellow

IN4005
Diode

Jumper
C

RG58

To S1A band switch
(some units LP Filter)

Jumper
b

22 Ω 1/4w resistor

White To VOX connector/C32

L75

To RF
Input

Armature
Contacts

To RF
Output

from RE AGC/
R47 Red

from C56/R50 Green

To L.P. Filter bare wire

To R56/C56 Gray

To CR4 Violet

IN4005
Diode

Jumper
C

C55 25pf

RG58

from C38 LOAD

Jumper
b

White To S3 standby switch